



# A REFRESHING DRINK EVERY TIME

Electronic Can and Bottle  
Vending Machines

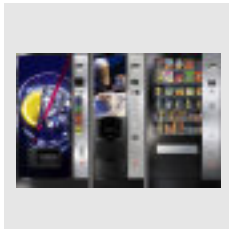
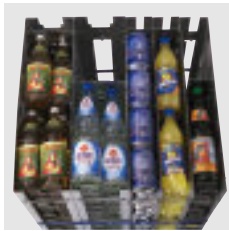
BOTTLES - CANS

# FK RANGE





COLD DRINK VENDORS



**Chutes**

Using the flexible Sielaff chutes system, the FK-range can be supplied with combination of up to 10 standard or narrow chutes to accept products between 0.2 l and 2.0 l, depending on the machine type and the shape of selected drinks.

The mix of standard and narrow chutes enables optimum use of chilled area and ensures ideal capacities for primary and secondary brands.

**Refrigeration**

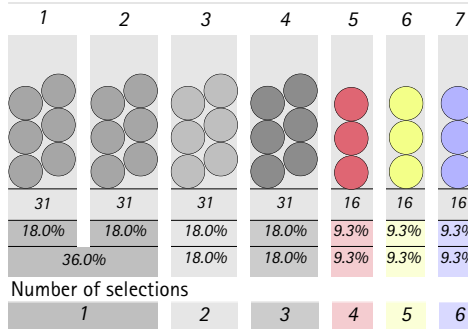
Electronically-controlled, high performance, push-in cooler unit.

The chiller unit may be programmed to a higher temperature during periods of inactivity, thereby saving energy.

**Vending lines**

The vending machine lines allow a concept in accordance with the location for everything that the consumer might desire for between-meal snacks. Sielaff offers the complete range of modern vending machines from only one manufacturer, i. e. be it hot, sweet, cold or fresh products, the vending machines offer everything the heart desires.

Cabinet width : 850 mm  
Number of 0.5 Litre PET bottle chutes



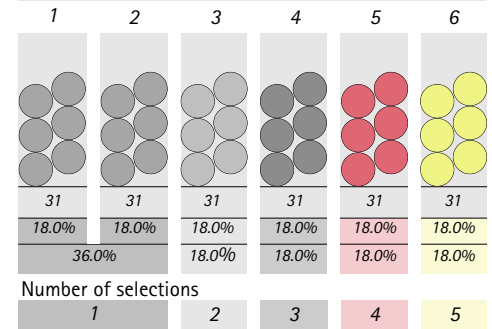
Capacity : 172

7 chutes

6 choices

various capacities for main, secondary and third products

Cabinet width : 850 mm  
Number of 0.50 Litre PET bottle chutes



Capacity : 186

6 identical chutes

5 choices with double capacity for main product



## The concept

The FK-range from Sielaff is based on a concept of first-class innovation. By combining cabinets of different dimensions and door designs of a different specification, a modular system, which can be adapted for selection and capacity requirements has emerged. The individual standard and narrow chute system, which enables each chute to be adjusted to suit the individual product, complements the machine package, giving total flexibility. Each chute can be exchanged in minutes, should reconfiguration be required. Sielaff machines, built to last with low maintenance costs, are subjected to the most rigorous robotic vend testing and temperature checks under climate-controlled conditions.

**FK-range: The flexible solution for vending bottles and cans**

The machine pictured is in RAL 9005 (black)  
 Kick plates and delivery pocket frame are in RAL 9005 (black)  
 Stainless steel operator panel with additional lock protection = EC standard

## The finest technology available

- SMD-vending machine controller with flash eeprom
- Electronically-controlled, high-performance, push-in cooling unit; optimised air circulation
- Internal door sealed all around
- Modular system is service and environment-friendly
- Machine base designed to facilitate transportation
- Internal master safety switch to disconnect mains electricity
- Coin slot and selection keypad are positioned at a suitable height for wheelchair users and children (130 cm).
- Machine sales and technical data, can be read out using a hand-held computer (MDC) via the IR-interface (EVA-DTS) next to the display, or remotely using a telemetry module

### Optional Extras:

- SIELECTOR, Sielaff's own PC-software enables configuration and offers statistical readout from the vending machine. Software upgrades can also be performed using this programme. Four methods of sending and receiving data are possible (MDB-Bus, ISDN, GSM or infrared).
- Lock for cashbox or coin mechanism
- Bottle-opener



Increased level of protection against vandalism, theft and fraud

Additional security features (available as optional extras)



Coin insert slide



Coin return drum



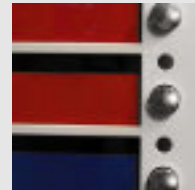
Locking lever protection



Side lock



High security frame



Metal selection buttons

## Examples of capacities / chute types

Product	FK 170			FK 185			FK 220			FK 230			FK 280			FK 270			FK 320		
	Cap.	Standard chute	Narrow chute	Cap.	Standard chute	Narrow chute	Cap.	Standard chute	Narrow chute	Cap.	Standard chute	Narrow chute	Cap.	Standard chute	Narrow chute	Cap.	Standard chute	Narrow chute	Cap.	Standard chute	Narrow chute
0.33 l can	286	5	1	342	5	1	556	5	1	496	8	-	784	7	-	560	8	-	800	8	-
0.50 l PET bottle	162	6	-	192	6	-	308	5	1	256	8	-	416	6	1	288	8	-	420	7	1
0.70 l Glass bottle	110	5	-	130	5	-	104	4	1	156	6	-	143	5	1	174	6	-	150	6	1
1.50 l PET bottle	-	-	-	-	-	-	76	4	-	-	-	-	105	5	-	-	-	-	95	5	-

The above examples are for guidance only. Please contact us for more information on specific bottles or cans.

The FK-Range –  
a series of  
machines in  
a variety of  
styles



**FK 185 FT:**  
Flat door, illuminated  
advertising panel



**FK 170 FT:**  
Flat door, illuminated  
advertising panel



**FK 230 CV:**  
Flat plain door,  
non-illuminated



**FK 270 EC:**  
Illuminated bow front



**FK 280 EO:**  
LGA approved Outdoor Version  
(rated IP 24)







**FK 320 FT:**  
Flat door, illuminated  
advertising panel

For more details kindly refer to technical leaflets.



## Technical Data

COLD DRINK VENDORS

Machine Type	FK 170	FK 185	FK 220	FK 230	FK 270	FK 280	FK 320
CV-version Compact vendor Basic version Flat door Non-illuminated		■			■		
FT-version Flat door, Illuminated poster		■	■	■	■	■	■
EC-version Bow-fronted Illuminated		■	■	■	■	■	■
EO-version EC-outdoor version Bow-fronted Illuminated							■

Machine Type	FK 170	FK 185	FK 220	FK 230	FK 270	FK 280	FK 320
Height (without...with kickplates)	1,620 ... 1,680 mm	1,830 mm	1,830 mm	1,830 mm	1,970 mm	1,830 mm	1,830 mm
Width	850 mm	850 mm	850 mm	1,120 mm	1,120 mm	990 mm	1,120 mm
Depth : flat/bow-fronted door	670/760 mm	670/760 mm	880/970 mm	670/760 mm	670/760 mm	970 mm	880/970 mm
Outdoor (h x w x d)					-	1,860 x 1,055 x 1,063 mm	-
Approx. weight*	242 kg	267 kg	400 kg	317 kg	395 kg	415 kg	470 kg
Current and power usage:							
Max. power usage	300 W	300 W	630 W	470 W	470 W	585 W	690 W
Voltage	230 V	230 V	230 V	230 V	230 V	230 V	230 V
Frequency	50 Hz	50 Hz	50 Hz	50 Hz	50 Hz	50 Hz	50 Hz
Current	16 A	16 A	16 A	16 A	16 A	16 A	16 A
Max. no. of selections	6-8	8	8	10	10	10	10
Standard no. of chutes	6	6	6	8	8	7	8
Max. bottle height	295/300	295/300	498	295/300	295/300	498	498
0.33 l Can	2-deep	2-deep	4-deep	2-deep	2-deep	4-deep	4-deep
0.50 l PET	1-deep	1-deep	2-deep	1-deep	1-deep	2-deep	2-deep
0.75 l PET - 1.0 l PET	possible**	possible**	1-deep	possible**	possible**	1-deep	possible**
1.50 l PET - 2.0 l PET	-	-	1-deep	-	-	1-deep	possible**

\* Based on the FT-version

\*\*depending on the size and shape of the bottle

Sielaff reserves the right to amend technical information contained in this leaflet without prior notice. August 2008

Credit system: Suitable for immediate installation of standard MDB-Coin mechanisms (preparation for BDV and EXECUTIVE available upon request). The machine can also be prepared to accept a banknote reader or a cashless payment system (e.g. keys, cards or mobile phone payment).

Peripherals: There is sufficient space to fit telemetry for example the Sielaff Remote Control (available as an option)



**Sielaff UK Ltd**  
 Unit 1 Westgate Trading Estate  
 Aldridge  
 Walsall, West Midlands  
 GB-WS9 8EX  
 Telephone: +44 1922 743010  
 Telefax: +44 1922 743659  
 Email: info@sielaff.co.uk

**Sielaff GmbH & Co. KG**  
 Automatenbau  
 Münchener Str. 20  
 D-91567 Herrieden  
 Tel: +49 98 25 / 18-0  
 Fax: +49 98 25 / 18-155  
 E-Mail: export@sielaff.de  
 Internet: www.sielaff.com