



## COMBI-VENDOR

for the sale of  
confectionery/snacks  
and bottled and  
canned drinks

SNACKS · DRINKS

FS  
RANGE





FS 2020  
(5/30+6)



FS 1500  
(3/16+4)

## Confectionery/Snacks

### FS 2020:

- 6 shelves of 4 spirals, 18 motors
- 6 shelves of 5 spirals, 24 motors
- 6 shelves of 6 spirals, 27 motors

### FS 1500:

- 6 shelves of 3 spirals, 12 motors
- 6 shelves of 4 spirals, 18 motors

- Black container walls with height-adjustable stainless steel shelves, to enhance product presentation
- Adjustable container walls offer the flexibility to accommodate most products
- Every confectionery shelf operates via a self-centering plug connection with gold-plated contacts
- Well-proven drive motors made in Germany

## Drinks

- FS 2020 can be configured with up to six individual can and bottle drink chutes from 0.2 to 1.5 litres (2.0 litres upon request)
- FS 1500 can be configured with up to four individual can and bottle drink chutes from 0.2 to 0.5 litres
- Standard and narrow chutes can be combined in FS2020
- Double depth / triple depth / 4 deep chutes available, depending on product size
- Chute can be easily modified to accommodate different bottles or cans
- DC-chute motor with high torque



FS 2020

FS 1500

Standard model in RAL 9005 (black)  
 Kick plates and delivery pocket frame in RAL 9005 (black)  
 Stainless steel operator panel, EC-design

## The concept

The larger FS 2020 and its smaller counterpart the FS 1500 are the optimum solution for in-between catering.

The FS 2020 is ideal for smaller sites where there is requirement to cost-effectively provide snacks and drinks, but insufficient space or demand for two vendors.

The FS 1500, which, although only 70 cm wide, can dispense a large range of confectionery/snacks and drinks in cans/bottles. Both bags and bars can be vended from various container layouts.

Highly-flexible, narrow chutes for bottles and cans offer the ideal combination of drinks to the customer. Lots of choice within a small space.

The range of products can be extended even more by connecting a bolt-on (SP) unit to accommodate more drinks, snacks or fresh food < +4°C.

## The finest technology available:

- SMD-Vending Machine Controller with flash EPROM (software upload without eprom change either by using a programming unit, handheld computer, PC or via telemetry)
- Fully automatic programming of selection numbers to motors
- Electronically-controlled, high-performance, push-in cooling unit; optimised air circulation
- Lockable, full-length internal door cover sealed all around, provides additional security, i.e. for cash box and programming panel
- Modular system is service and environment-friendly
- Machine base designed to facilitate transportation
- Internal master safety switch to disconnect mains electricity
- Coin slot and selection keypad are positioned at a suitable height for wheelchair users and children (130 cm).
- Uniform housing depth of 880 mm
- Machine, sales and technical data can be downloaded using a handheld computer (MDC) via the IR-interface (EVA-DTS) next to the display, or remotely using telemetry

### Optional Extras:

- Accepts bolt-on unit (SP1300)
- Lockable delivery pocket flap enables access only when a vend has been made.
- Light bar sensor confirms product delivery
- SIELECTOR, Sielaff's own PC-software, enables configuration and offers statistical readout from the vending machine. Software upgrades can also be performed using this programme. Four methods of sending and receiving data are available: MDB-USB, ISDN, GSM or infrared



**Spirals**

Products are placed in spirals and are dispensed on a first-in-first-out basis. Shelves and spirals are made from highly-polished stainless steel. Typical layout examples are shown on the next page, although many other options are possible to suit your specific needs.



**Chutes**

With the flexible Sielaff chute system, the FS 2020 can be supplied with a combination of up to six chutes, depending on the snack container selected, and the FS 1500 with up to four narrow chutes. Delivery technology using DC motors. Depending on configuration, PET bottles, glass bottles or cans can be loaded one behind the other in twos, threes or fours.



**Refrigeration**

Electronically-controlled, high performance, push-in cooler unit. The vendor has a high energy efficiency rating due to the following factors: optimised air circulation; superior insulation; a large floor filter and rear air vent. The chiller can be programmed to a higher temperature during periods of inactivity, thereby saving energy.



**Multiflex pusher**

The FS-Series can be fitted with Multiflex pushers for optimum vending of Tetra-Paks up to 1 Litre for example.

**Increased level of protection against vandalism, theft and fraud**

Additional security features (available as optional extras)



Coin insert slide



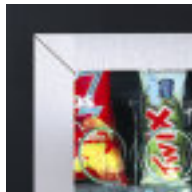
Coin return drum



Locking lever protection



Side lock



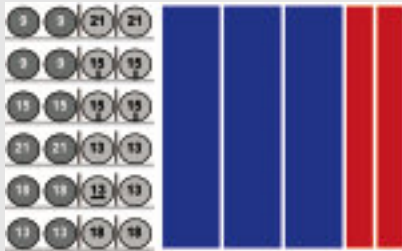
anti vandalism panel



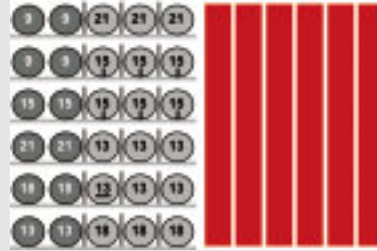
Lockable delivery pocket flap

## Our layout recommendations

### FS 2020



6 selections of bags, 12 selections of bars  
3 standard chutes, 2 narrow chutes\*

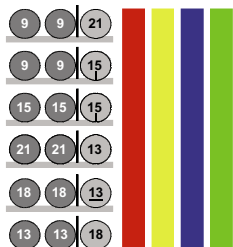


6 selections of bags, 18 selections of bars  
6 narrow chutes\*

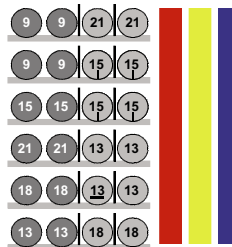


9 selections of bags, 18 selections of bars  
5 narrow chutes\*

### FS 1500



6 selections of bags, 6 selections of bars  
4 narrow chutes\*



6 selections of bags, 12 selections of bars  
3 narrow chutes\*

The above layouts are suggestions only. For your individual requirements please contact us.

\* based on 85 mm narrow chutes

# Capacities at a glance

## FS 2020

Confectionery: 6 shelves/15 pitch spirals; Drinks: S = standard chute, N = narrow chute

Confectionery containers						0.33 l can	0.5 l PET
Max. capacity	select.	capac.	S	N	selection drinks	4 deep (S) 3 deep (N)	CC returnable bottles
Triple Container	18	270	4		4		
			3	2	5	410	
			4	1	5		288
			2	4	6	448	
4x Container	24	360	3	3	6		288
			3		3		
			4		4	384	256
			3	1	4		
			2	3	5	384	
			3	2	5		256
5x Container	30	450	1	4	5		
			1	5	6	416	224
				6	6	384	
			3		3		
			2	2	4	320	
6x Container	36	540	3	1	4		224
			1	4	5	352	192
				5	5		
				6	6	384	192
6x Container	36	540	2		2		
			3		3	288	192
			2	1	3		
			1	3	4	288	160

## FS 1500

Confectionery: 6 shelves/15 pitch spirals; Drinks: narrow chutes

Confectionery containers				0.33 l can	0.5 l PET
Capacity	selections	capacity	narrow chute	4 deep	2 deep
3x Container	18	270	4		128
	12	180	4	4	256
4x Container	24	360	3	3	128
	12	180	3	3	192

## One vending machine in a variety of design options...

You decide what your site requires. Whether it be an outdoor-version, machine bank or vandal-resistant machine – there is a solution for everyone.

We are pleased to tailor your quotation to your own specific needs.



**FS 2020 EO:**  
*LGA approved Outdoor Version  
rated IP 24 (only FS 2020)*



**FS 2020 EC:**  
*Black*



**FS 1500 EC:**  
*Black*



**FS 2020 + SP 1300 LM:**  
*Combination with bolt-on unit (SP 1300)*



**FS 2020 SI:**  
*SIELEGANCE design*



## Technical Data

Machine Type	FS 2020 EC	FS 2020 SI
Design versions*	Basic version	Sielegance version
Dimensions (h x w x d, mm)	1,830 x 990 x 880	1,830 x 990 x 964
Weight approx.	475 kg	475 kg
Cabinet colour	black, RAL 9005 or white, RAL 9010	grey, RAL 7024
Front/Door	black, RAL 9005 or white, RAL 9010	grey, RAL 7024
Delivery pocket frame	black, RAL 9005	black, RAL 9005
Operator panel	stainless steel	black, RAL 9005
Connection and consumption data:		
Current and power usage	670 W	670 W
Voltage	230 V	230 V
Frequency	50 Hz	50 Hz
Current	16 A	16 A

Machine Type	FS 1500 EC	FS 1500 SI
Design versions*	Basic version	Sielegance version
Dimensions (h x w x d, mm)	1,830 x 700 x 880	1,830 x 700 x 964
Weight approx.	297 kg	297 kg
Cabinet colour	black, RAL 9005 or white, RAL 9010	grey, RAL 7024
Front/Door	black, RAL 9005 or white, RAL 9010	grey, RAL 7024
Delivery pocket frame	black, RAL 9005	black, RAL 9005
Operator panel	stainless steel	black, RAL 9005
Connection and consumption values:		
Current and power usage	400 W	400 W
Voltage	230 V	230 V
Frequency	50 Hz	50 Hz
Current	16 A	16 A

Credit system: Suitable for immediate installation of standard MDB-Coin mechanisms (preparation for BDV and EXECUTIVE available upon request. The machine can also be prepared to accept a banknote reader or a cashless payment system (e.g. keys, cards or mobile phone payment).

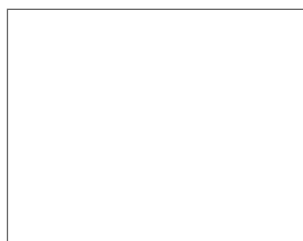
Peripherals: There is sufficient space to fit telemetry unit for example the Sielaff Remote Controller (available as an option).

Please note: When placing an order, please specify exactly the products.

We would be only too pleased to advise you on special layouts and security features available.

Sielaff reserves the right to amend technical information contained in this leaflet without prior notice.

Issue 8/2008



Sielaff UK Ltd  
Unit 1 Westgate Trading Estate  
Aldridge  
Walsall, West Midlands  
GB-WS9 8EX  
Telephone: +44 1922 743010  
Telefax: +44 1922 743659  
Email: info@sielaff.co.uk

Sielaff GmbH & Co. KG  
Automatenbau  
Münchener Str. 20  
D-91567 Herrieden  
Tel: +49 98 25 / 18-0  
Fax: +49 98 25 / 18-155  
E-Mail: export@sielaff.de  
Internet: www.sielaff.com